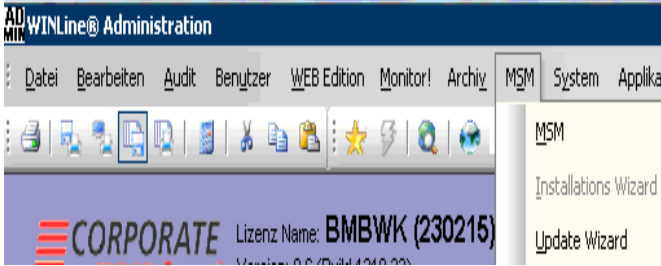
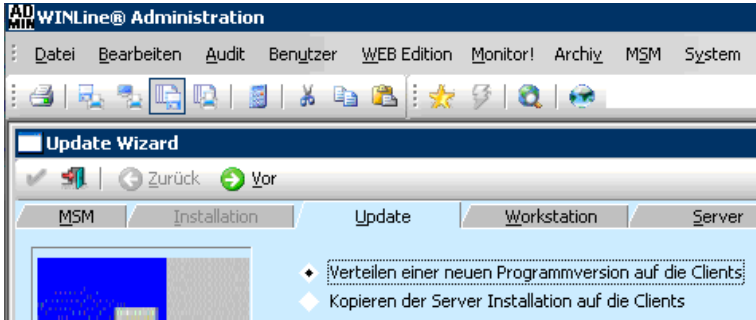
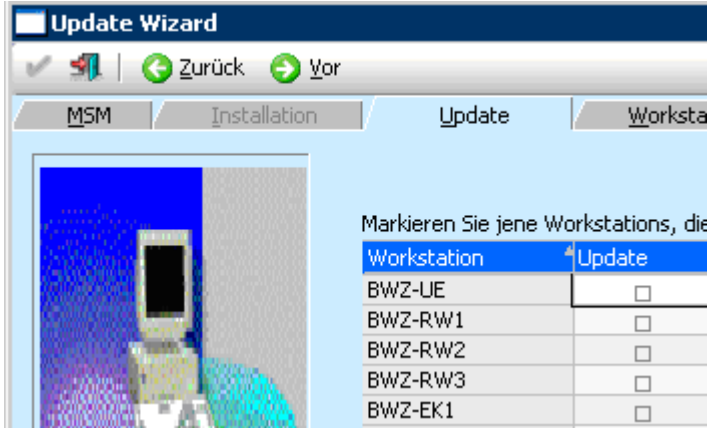
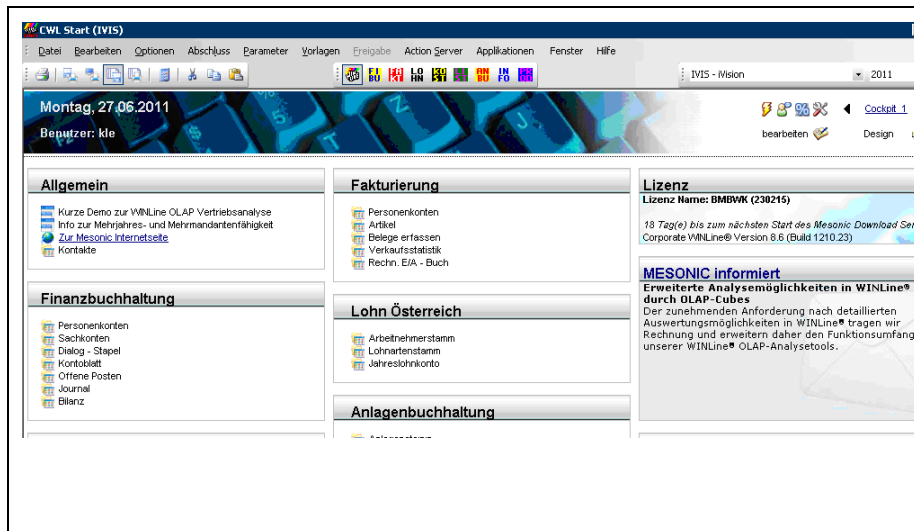


## 1.1. Verteilung der neuen Installation über den MSM auf die Clients

(Dies ist zwingend durchzuführen).

 <p>The screenshot shows the 'WINLine@ Administration' application window. The menu bar includes 'Datei', 'Bearbeiten', 'Audit', 'Benutzer', 'WEB Edition', 'Monitor!', 'Archiv', 'MSM', 'System', and 'Applika'. The 'MSM' menu is open, showing options for 'MSM', 'Installations Wizard', and 'Update Wizard'. The license information at the bottom reads 'CORPORATE Lizenz Name: BMBWK (230215)'.</p>	<p>Start des Admin und Aufruf des MSM</p>												
 <p>The screenshot shows the 'Update Wizard' dialog box. It has tabs for 'MSM', 'Installation', 'Update', 'Workstation', and 'Server'. The 'Update' tab is selected. The dialog contains two options: 'Verteilen einer neuen Programmversion auf die Clients' and 'Kopieren der Server Installation auf die Clients'.</p>	<p>Verteilung der neuen Programmversion auf die Clients..</p>												
 <p>The screenshot shows the 'Update Wizard' dialog box with the 'Update' tab selected. It displays a list of workstations with checkboxes for selection. The text above the list says 'Markieren Sie jene Workstations, die'. The list is as follows:</p> <table border="1"><thead><tr><th>Workstation</th><th>Update</th></tr></thead><tbody><tr><td>BWZ-UE</td><td><input type="checkbox"/></td></tr><tr><td>BWZ-RW1</td><td><input type="checkbox"/></td></tr><tr><td>BWZ-RW2</td><td><input type="checkbox"/></td></tr><tr><td>BWZ-RW3</td><td><input type="checkbox"/></td></tr><tr><td>BWZ-EK1</td><td><input type="checkbox"/></td></tr></tbody></table>	Workstation	Update	BWZ-UE	<input type="checkbox"/>	BWZ-RW1	<input type="checkbox"/>	BWZ-RW2	<input type="checkbox"/>	BWZ-RW3	<input type="checkbox"/>	BWZ-EK1	<input type="checkbox"/>	<p>Markierung aller Clients im BWZ., auf die das Update verteilt werden soll.</p>
Workstation	Update												
BWZ-UE	<input type="checkbox"/>												
BWZ-RW1	<input type="checkbox"/>												
BWZ-RW2	<input type="checkbox"/>												
BWZ-RW3	<input type="checkbox"/>												
BWZ-EK1	<input type="checkbox"/>												



Beim Start des Programms muss auf das Cockpit 1 umgeschaltet werden. Es ist das Standard Cockpit.